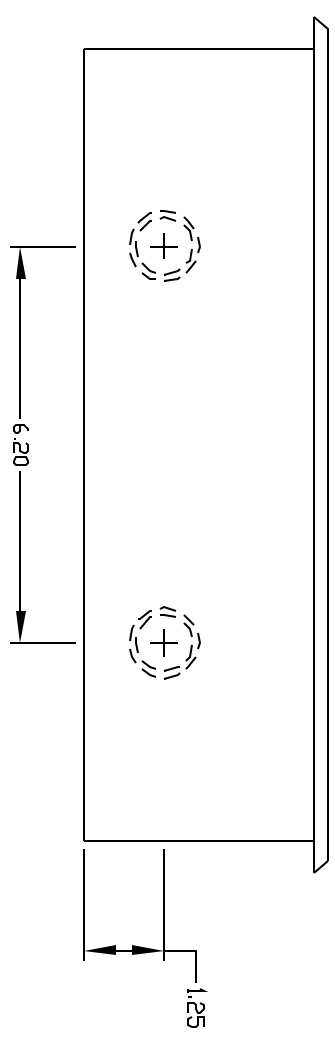


BACK BOX DIMENSIONS:  
(12.4"Wx7.4"Hx3.6"D)



**SPECIFICATIONS:**


FLUSH MOUNT STEEL BOX-WHITE FINISH  
4 SUPER BRIGHT RED LED DIGITS, 4" HIGH, 7 SEGMENT  
VISIBLE OVER 100 FEET AWAY  
CAPACITIVE BACKUP  
1/8" RED ACRYLIC LENS

**MODELS:**

CC2001F: 120VAC, 50/60HZ, 6VA MAX VERSION  
CC2002F: 24VAC VERSION

APPROVALS	DATE
DRAWN BY DTI	8-6-01
CHECKED BY	
APPROVED BY	

VCAD LT\ATS DWGS\CC2000\



P.O. BOX 5705  
SHREVEPORT, LA  
71135

PROJECT	SCALE 1:3
CC2000F SERIES SYSTEM CLOCKS FLUSH MOUNT	JOB #
DESCRIPTION	SHEET #
ASSEMBLY	REVISION
	FILENAME: 2000F
	DRAWING #