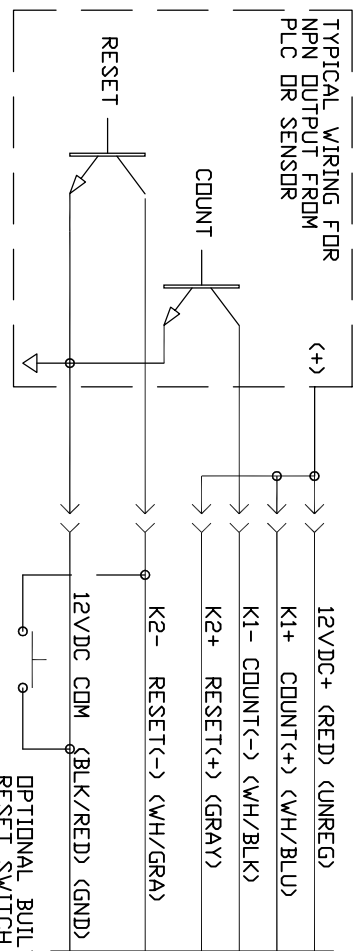


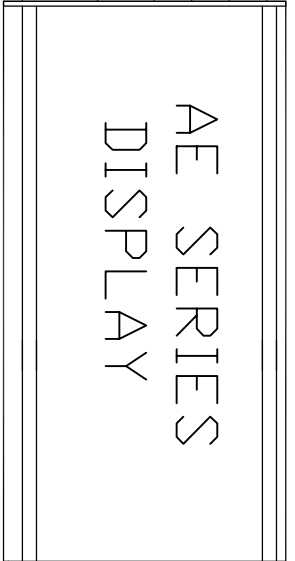
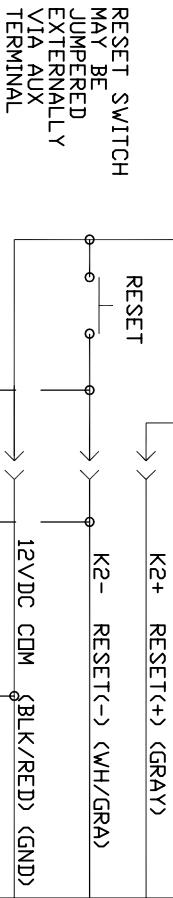
TYPICAL DISPLAYS



DISPLAYS ARE SHOWN WITH 120VAC POWER.

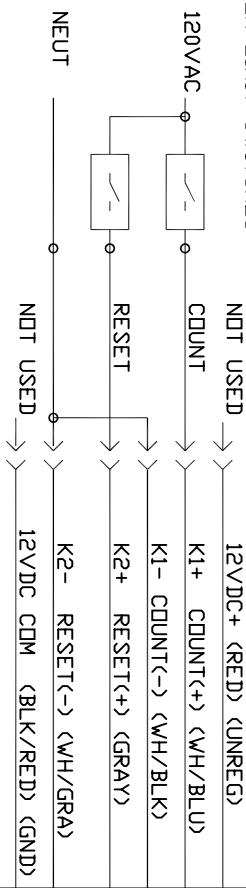
- BLK 18 AWG. \_\_\_\_\_ LINE
- WH 18 AWG. \_\_\_\_\_ NEUT
- GRN/YEL 18 AWG. \_\_\_\_\_ GND

TYPICAL WIRING FOR DRY CONTACTS FROM P.B. OR LIMIT SWITCH



- BLK 18 AWG. \_\_\_\_\_ LINE
- WH 18 AWG. \_\_\_\_\_ NEUT
- GRN/YEL 18 AWG. \_\_\_\_\_ GND

TYPICAL WIRING FOR 120VAC SIGNALS FROM PLC OR LIMIT SWITCHES



- BLK 18 AWG. \_\_\_\_\_ LINE
  - WH 18 AWG. \_\_\_\_\_ NEUT
  - GRN/YEL 18 AWG. \_\_\_\_\_ GND
- OPTIONAL POWER AVAILABLE

>> THIS SYMBOL IS USED FOR PIGTAIL LEAD WIRES OR TERMINAL BLOCKS

K1 AND K2 INPUTS ARE OPTD ISOLATED INPUTS. SIGNALS RANGING FROM 5VDC TO 120VAC CAN BE APPLIED.  
 MOST AE SERIES DISPLAYS ARE PROVIDED WITH #18 AWG, PIGTAIL LEAD WIRES FOR ALL EXTERNAL WIRING.

TERMINAL BLOCKS AND CONNECTORS ARE LOCATED INSIDE EACH AE SERIES DEVICE FOR OTHER WIRING OPTIONS.

\*\* WHEN THE OPTIONAL BUILT-IN RESET SWITCH IS ORDERED, IT WILL BE WIRED AS SHOWN. NOT RECOMMENDED FOR 120 VAC SIGNAL APPLICATIONS.

APPROVALS	DATE
DRAWN BY DTI	6/06/01
CHECKED BY	
APPROVED BY	
REVISED BY	

VCAD LTVATS DWGS\AE\OPTIONS\

APPLIED TECHNICAL SYSTEMS

P.O. BOX 5705  
SHREVEPORT, LA  
71135

SCALE \_\_\_\_\_

PRODUCT  
AEXX-230

DESCRIPTION  
COUNTER / TOTALIZER  
TYPICAL WIRING SCHEMES  
WIRING DIAGRAM

FILENAME: 230WD1

DRAWING # \_\_\_\_\_

8.5 x 11