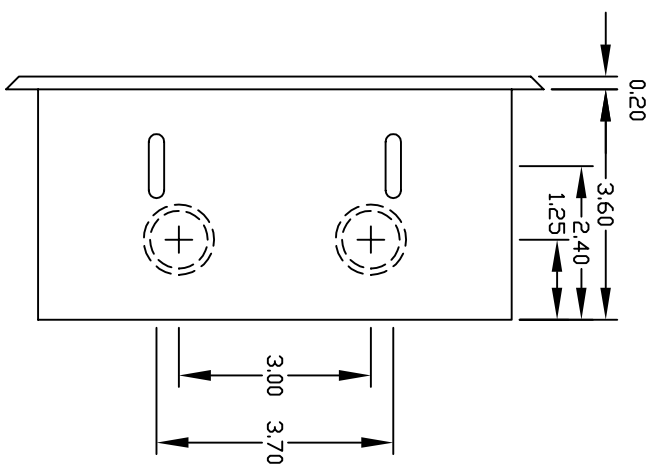
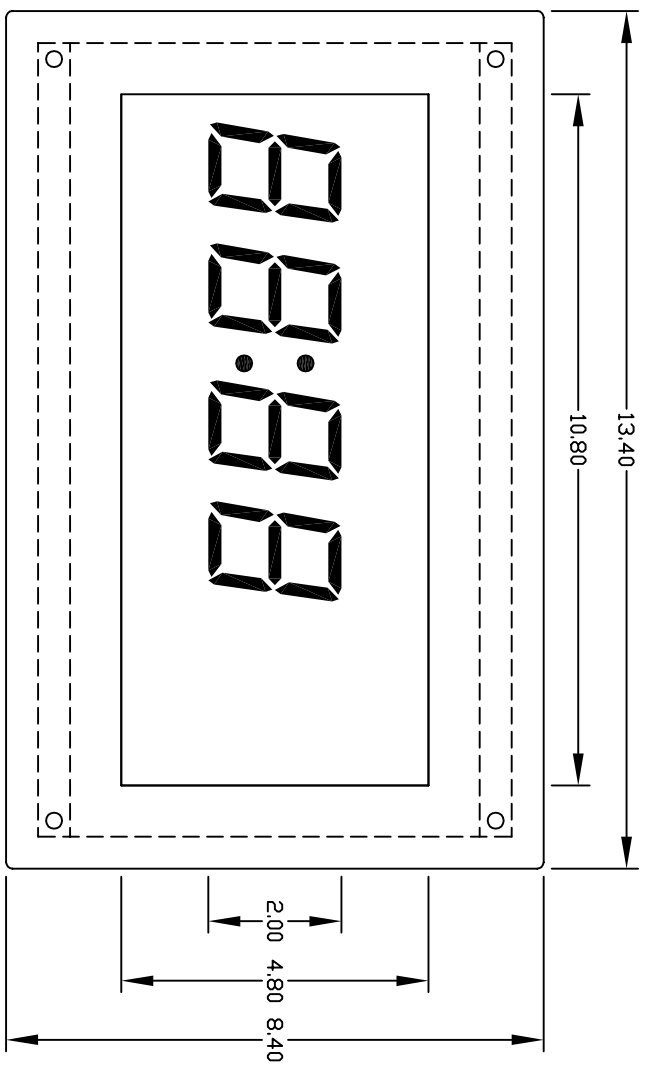
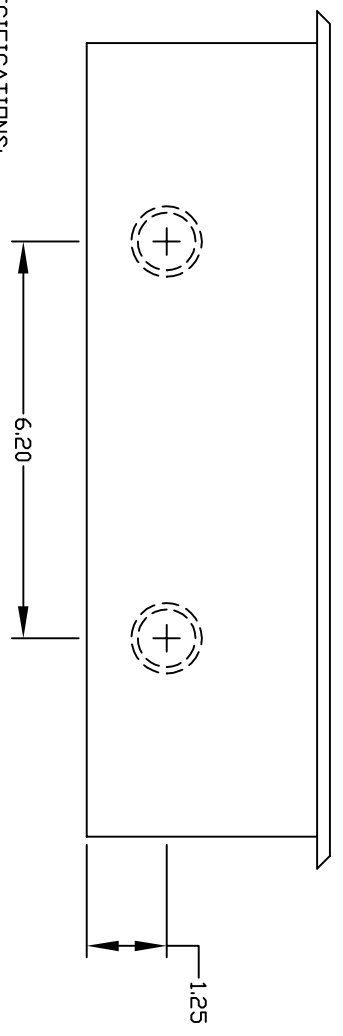


PN AE24F-



BACK BOX DIMENSIONS:
(12.4"W X 7.4"H X 3.6"D)
APPROXIMATE CUTOUT:
(12.75"W X 7.75"H)



SPECIFICATIONS:

FLUSH MOUNT FRONT PANEL, STEEL-WHITE FINISH
BACK BOX, STEEL-WHITE FINISH
4 RED LED DIGITS, 2" HIGH, 7 SEGMENT,
VISIBLE UP TO 100 FT.
BATTERY BACKUP
1/8" RED ACRYLIC LENS
STANDARD POWER 120VAC, 60HZ
OPTIONAL POWER AVAILABLE

APPLICATIONS:

MULTI-FUNCTION CLOCK TIMER, ELAPSED TIMER, COUNT DOWN
TIEMR, MASTER/SLAVE DISPLAY, RS232 CONTROLLED DISPLAY....

APPROVALS	DATE
DRAWN BY DTI	8-21-01
CHECKED BY	
APPROVED BY	

VCAD LT\ATS DWGS\AE\AE2X\
ATS APPLIED TECHNICAL SYSTEMS

P.O. BOX 5705
SHREVEPORT, LA
71135

PROJECT
AE24F-
FLUSH MOUNT

DESCRIPTION	SCALE
ASSEMBLY	1:3
	JOB #
	SHEET #
	REVISION
	FILENAME: AE24F-
	DRAWING #