

THE GPS-427A GPS ANTENNA / RECEIVER SYSTEM INCLUDES A BUILT-IN GPS RECEIVER THAT ACQUIRES DATA FROM THE GLOBAL POSITIONING SATELLITES. IT PROVIDES NMEA DATA VIA RS232 AT 2400 BAUD (4800 BAUD ON OLDER VERSIONS).

ENCLOSURE

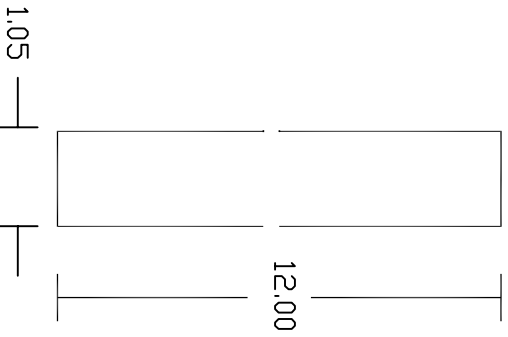
WEATHERPROOF - NEMA 4X PLASTIC
TWO KNOCKOUT HOLES ARE LOCATED ON THREE SIDES.
PVC PIPE FITTING IS INCLUDED CENTERED
ON BOTTOM OF ENCLOSURE

MOUNTING

REQUIRES AN UNOBSTRUCTED VIEW OF THE SKY.
MOUNT VERTICALLY IF POSSIBLE OR AS SHOWN WITH PVC
PIPE COUPLING PROVIDED TO CUSTOMER SPECIFICATIONS.

WIRING

CONNECT TO CLEARLY LABELED TERMINAL BLOCK TXD1,
GND, +12VDC (3 WIRES REQUIRED), CONNECT TO DATA,
GROUND, AND +12VDC TERMINALS ON AE SERIES GPS
MASTER CLOCK.



SPECIFICATIONS

OPERATING TEMPERATURE: -30C TO +85C

INPUT VOLTAGE: 10 TO 30 VDC (110 MA @ 12 VDC)

RECEIVER SENSITIVITY: -160 dBW MINIMUM

ACQUISITION TIME: UP TO 15 MINUTES (NO DATA KNOWN)

OUTPUT: NMEA0183 VERSION 2.0 ASCII (GPGGA, GPGSA,
GPRSV, GPRMC, GPVTG, GRME, GRMT)

VCAD LTV\ATS DWGS\AE\OPTIONS\



P.O. BOX 8670
SHREVEPORT, LA
71148-8670

APPROVALS	DATE
DRAWN BY DTI	5-31-01
CHECKED BY	
APPROVED BY	
REVISED	

PROJECT	GPS-427A	SCALE
DESCRIPTION	GPS-427A ANTENNA/RECEIVER ASSEMBLY	JOB #
	Garmin (GPS35-HVS)	SHEET #
		REVISION
		FILENAME: GPS427A
		DRAWING #