

ADDENDUM

427PC2 PC TIME & DATE SETTING SOFTWARE

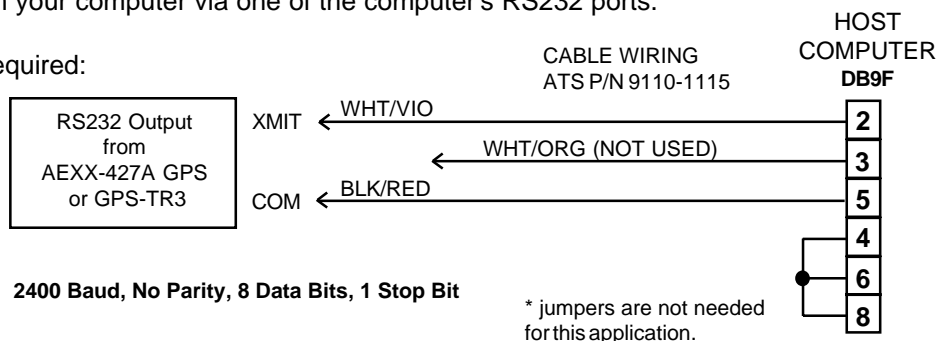
(Filename: ATS427PC2.EXE)

427PC2 is a WIN 95/98/NT utility that reads the time and date information from the RS232 serial output (354 output) of an AE Series GPS Master Clock, or GPS-TR3 Master Clock Interface. It is intended for applications where it is desired to synchronize a computer's time and date to the atomic clock.

427PC2 is executed only as needed. This can be done manually by running the program when desired, or automatically using your program scheduling software.

427PC2 communicates with your computer via one of the computer's RS232 ports.

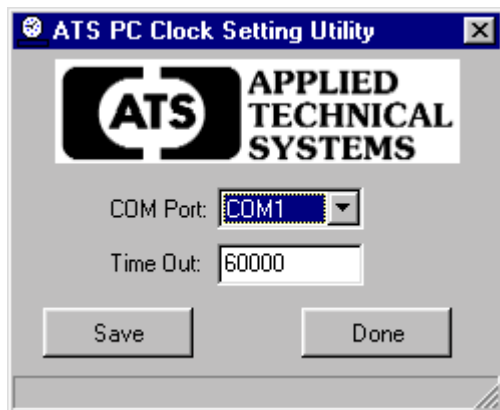
A two conductor cable is required:



427PC2 sets the port for: **2400 Baud, No Parity, 8 Data Bits, 1 Stop Bit**

Installing 427PC2

Locate filename ATS427PC2.exe on the 427PC2 CD. This is a small, self-contained utility. It doesn't need any other files to run, or an elaborate setup program for installation. Simply copy the file named "ATS427PC2.EXE" to the folder of your choice. Double click this file from Windows Explorer, or access it from a shortcut. The first time this program is run it will open a small menu and place its icon on the taskbar. Select the desired COM port and "Time Out" time then click "Save".



Taskbar Icon



The taskbar icon will disappear after the date and time have been updated. The time in the taskbar may take a few seconds to update even though the system time updates immediately.



800-444-7161

FAX: 318-797-4864

BOX 5705 • SHREVEPORT, LOUISIANA 71135 • 318-797-7508

OPERATION

The "Time Out" time is typically set for 60 seconds (60000 milliseconds), as the AE Series GPS Master Clock and the GPS-TR3 send data once a minute. Once the settings are saved to the ATS427PC2.DAT file, the program will only use the taskbar icon as an indicator that it is running. If a time out or update occurs, the program will terminate. However, if the menu is showing, 427PC2 will continuously poll the COM port. This feature is included to help in establishing data communications. To reopen the menu or to close the program, right click on the taskbar icon.

Using 427PC2 with AEXX-427A GPS Master Clocks

The AE Series GPS Master Clock gets its time and date from the GPS 427A Antenna/Receiver. Therefore, it will send an invalid date and generate a window to notify the user until it is updated by the GPS receiver. The GPS Master Clock will also send an invalid time while in 12Hr Format until it is updated by the GPS receiver. Refer to the GPS Master Clock System manual.

Using 427PC2 with the GPS-TR3 Master Clock Interface

The GPS-TR3 Master Clock Interface gets its time and date from the GPS 427A Antenna/Receiver. The GPS-TR3 will send time and date if it is "locked on" to GPS Satellites.

If the GPS-TR3 is not "locked on" or is not connected to the GPS-427A Antenna/Receiver, the 427PC2 program will time out and the time and date will not be set.

Refer to the GPS-TR3 manual for more information.